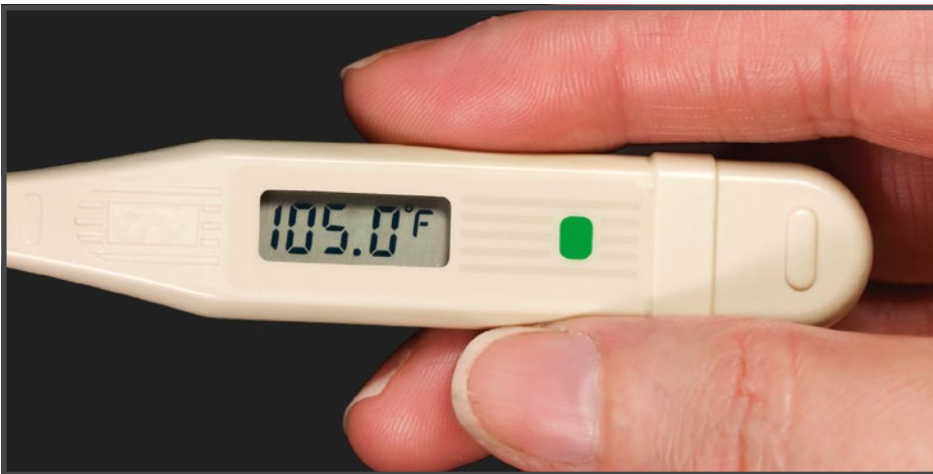


CLASSICAL SWINE FEVER (CSF)

A THREAT TO THE U.S. PORK INDUSTRY

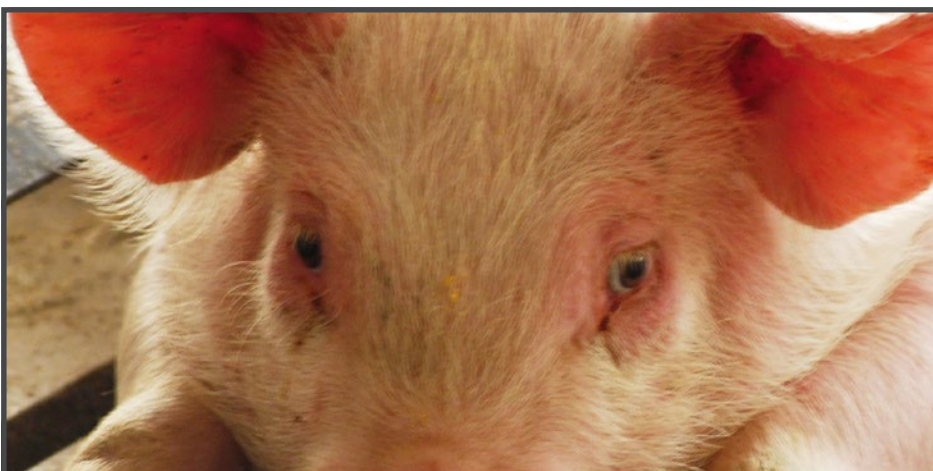
Classical swine fever (CSF), also known as hog cholera, is a highly contagious viral disease of pigs. Pigs infected with CSF may look similar to animals infected with other diseases including African swine fever, porcine reproductive and respiratory syndrome (PRRS), and porcine circovirus associated disease (PCVAD).



HIGH FEVER



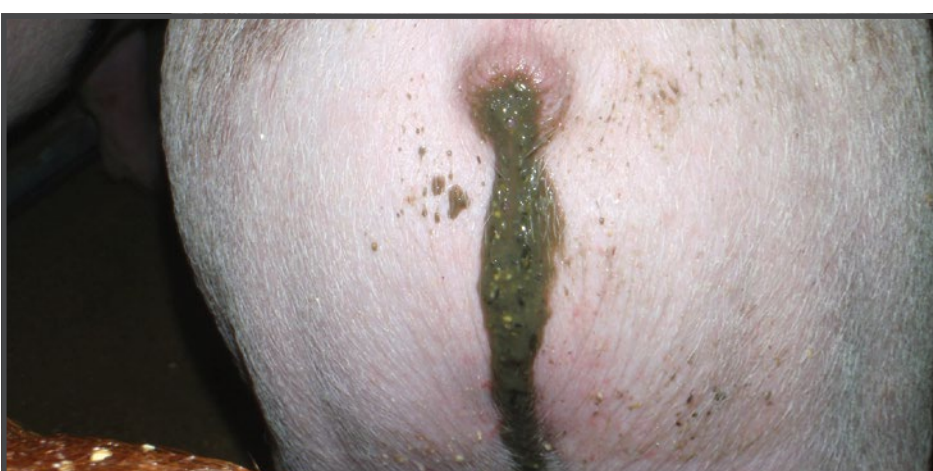
HUDDLING



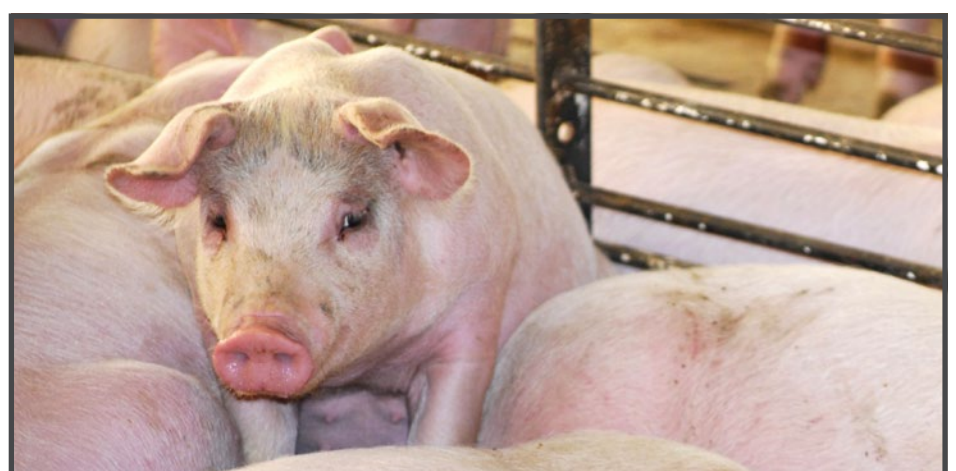
REDDENED, CRUSTY EYES



SKIN DISCOLORATION



DIARRHEA



OFF-FEED

IF YOU SUSPECT A FOREIGN ANIMAL DISEASE:

Call your herd veterinarian, State Animal Health Official (SAHO), or Area Veterinarian-In-Charge (AVIC) to report your concerns, or call 1-866-536-7593 or 800-940-6524 (24 hours) to reach USDA APHIS Veterinary Services for assistance.

Photo Credit: USDA APHIS Foreign Animal Disease Diagnostic Laboratory, Alex Ramirez, and Pam Zaabel



United States Department of Agriculture (USDA)
Animal and Plant Health
Inspection Service
Veterinary Services
4700 River Road
Riverdale, MD 20737
aphis.usda.gov



American Association of Swine Veterinarians (AASV)
830 26th Street
Perry, IA 50220
aasv.org
515-465-5255



National Pork Board
1776 NW 114th Street
Des Moines, IA 50325
porkcheckoff.org
800-456-7675



Center for Food Security and Public Health (CFSPH)
College of Veterinary Medicine
Iowa State University
Ames, IA 50011
cfsph.iastate.edu